

M

**MOTT
MACDONALD**

M

Ideas make space.

For business. For change. For good.

Start your graduate career
at Mott MacDonald.

To be great at what you do, join people who are great at what they do.

Introducing Mott MacDonald

Where people matter

Welcome to Mott MacDonald, a company where you can make a real difference.

We live in a dynamic and rapidly changing world, and our passionate teams of experts thrive on tackling many of its most pressing challenges – social, economic and environmental. We like to look at problems from a fresh angle and aim to add value at every stage, for our clients, our employees, and the lives we touch every day.

Our 16,000 experts are working on engineering, management and development projects in 150 countries. We're constantly finding opportunities in complexity.

We're all in this together

We like to think of ourselves as one big family. We're one of the world's largest employee-owned companies. We can choose the work we take on, allowing us to focus on the issues that really matter. We're independent in thought and action, which means we advise what is genuinely right for our clients, our staff, and communities – not what is easy. We want to do a great job for everyone involved.

"What's the best thing about working at Mott MacDonald? The people. This was important for me when deciding who I wanted to join. Work is where most of your day is spent and I'm lucky to have people around me with whom I get on really well."

Sowunmi Coker

Graduate electrical engineer

"Once I learnt about the values and I met the people who represent the company, I was convinced that Mott MacDonald and I would be a perfect fit. The prominent culture of respect and support here is a great reason to look forward to every day at work."

Zuza Stone

Graduate civil engineer

Exciting projects that make a difference

Transforming communities and building a smarter world.

Many of our people joined Mott MacDonald for the chance to utilise their skills on projects that make a difference to the communities that we live and work in. Be part of our innovative network of experts and not only will you learn something new every day but you will also be right in the thick of the excitement.

Improvement is at the heart of what we offer and with our diverse range of global projects, our experts get the chance to solve issues and create an impact.

We've taken Hong Kong International Airport to new heights and also transformed education and learning for pupils in Ghana. For us the 'opportunity space' is where we can create better economic, environmental and social outcomes.

Our work spans across a range of different sectors. By challenging norms, we align the right combinations of expertise and experience to deliver long-lasting value.



Opportunities galore



It's the thinkers of today that are changing tomorrow's world.

Start your career with us and you will have an array of opportunities at your fingertips. You'll be part of a globally connected community with access to an exceptional breadth of career paths.

Anthony Ssenyonga

Graduate civil engineer

"I got the opportunity to work in the Middle East for a few months, which exposed me to new experiences such as completing site inspections, and meeting with clients and project management consultants. And I have gained rewarding graduate experience by participating in Mott MacDonald's equality, diversity and inclusion initiatives."

Vanessa Burton

Graduate civil engineer

"Since joining, I have been involved in two very exciting projects in Doha as a design verification engineer. This involved liaising with people all over the world and getting involved in some really challenging design issues. The highlight so far has been winning Mott MacDonald's Equality, Diversity and Inclusion award."



10 things you can expect from Mott MacDonald

1.

Restless curiosity

We like challenge, change and to be always learning. We are independent thinkers, constantly curious about the world and how to make it better for everyone.

2.

Creativity

We bring together the brightest minds to inquire, problem solve, invent and achieve the best outcomes.

3.

Human focus

We never lose sight of the human impact of our actions and the responsibility that this entails.

4.

Respect

We are inclusive, respecting the environment and everyone with whom we work, valuing all people and cultures equally.

5.

Integrity

We deliver on our promises, behave ethically and do not tolerate bribery or corruption.

7.

Partnership

We are at our best when we work with our clients to help define and solve problems, and deliver solutions.

8.

Leadership

We want to be at the leading edge of everything we do – so our clients get the best results.

9.

Collaboration

We develop trust-based relationships that allow us to do our best work.

10.

Commitment

We aim to turn obstacles into sustainable solutions for our clients and the lives they touch, by maintaining unswerving focus on their needs.

So, what's life really like at Mott MacDonald?

Network beyond your day job

It's important to us that we enable our people to fulfil their ambitions and recognise their full potential. Therefore, we believe that work isn't all about work. So, what else could a career at Mott MacDonald give you?

We work and we play

The range of activities organised by our office sports and social committees is almost as diverse as the people who work for us. From our extremely popular footy matches, to theatre trips, quizzes, and inter-office competitions – there is always something to get involved in. You will have the opportunity to expand your social and professional networks by meeting new people across the company. It's a lot of fun!

Reap the rewards

Start your career with us and you can expect to earn a competitive starting salary (£25,000 – £28,000) along with biannual salary reviews*. We like to ensure that our people are regularly rewarded. Therefore, as part of our commitment to employee ownership, we share a proportion of each year's profit among our staff enabling them to benefit from a yearly bonus.

"There are many extra benefits such as gym membership discounts and social events, which make you feel at home."

Rui Zheng

Graduate project manager

Charity starts here

If you're passionate about making a positive change then this is the place for you. Our culture of corporate social responsibility runs deep and we encourage all our staff – graduates especially – to get involved. Some of the things that we like to get involved in are:

- Investing in the next generation by promoting engineering in schools
- Being active members of humanitarian and disaster relief charities such as RedR, Water Aid and Engineers Without Borders
- Supporting external charities through our corporate social responsibility initiative

Diversity is at the heart of our organisation

We also have our Advance employee network which provides a range of equality, diversity and inclusion opportunities and staff events.

"As an intercounty hurler, my bosses are very understanding with my training commitments, allowing me to work flexible hours so that I can perform to the best of my abilities on the pitch and in the office."

Kevin Gilmartin

Graduate civil engineer

*For the first three years, then annually thereafter.

Helping you grow to your potential – what to expect

Inspire professional excellence

As soon as you join us as a graduate, you will be part of the global Inspire Professional Excellence (IPE) network. The IPE network will provide you with a nurturing and challenging environment in which to expand your horizons, develop new skills, build confidence, and make new connections. This is done through a range of talks, workshops, mentoring, and formal and informal learning.

Where ambition meets opportunity

We're good at what we do and you can be too. We are experts at getting our graduates to chartered status so, using all the resources available to you, you will have the opportunity to work on exciting projects while making your career journey to chartered status.

An academy of professionals

As well as the IPE network, you will be a member of the Mott MacDonald Academy, a structured development programme for entry level professionals. The Academy will introduce you to key business and commercial competencies, helping you to drive your career forward while improving your personal effectiveness, customer focus, communication and teamwork.

Guidance along the way

It doesn't stop there. You will be assigned a dedicated chartered mentor who will guide you to meet your professional goals and objectives. You will also have various online learning tools and courses at your fingertips ready and available to aid your development.

Commercial success


**Your
future**


Professional excellence

Employee fulfilment



Customer satisfaction

In the spotlight with

Hilary Harrison

Graduate project manager

What has your experience been like so far?

I really enjoyed the start of my journey at Mott MacDonald, it really didn't take long to get to know everyone and fit into the team. Everyone was extremely friendly and supportive which is important, especially for a graduate.

Describe some of the work you have been involved in

So far, I have worked on some school extension projects which has been very interesting. I have attended stakeholder meetings and built many client relationships which has been brilliant experience for me.

How is the work-life balance

The work-life balance is one of the attractive benefits of working here. There is never any pressure to stay beyond the standard office hours. If I do find myself still in the office slightly later than usual, my manager will often encourage me to leave for the day and start fresh tomorrow.

Describe your workplace

The office environment is friendly and relaxed and there is always someone here to provide support and advice. We often have social events which take place, such as a quiz, bowling, ping-pong, go-karting, and golf days, so there is a lot to get involved in.



Our placement opportunities

Your chance to test the waters and discover Mott MacDonald.

We want you to be sure about joining us once you leave university.

Our range of summer internships and industrial placements are an opportunity for you to get an insight into the industry – and our company. Focusing on one of our many sectors, you'll gain valuable experience by working alongside graduates and experienced professionals. We recruit many of our interns to graduate roles, so a placement can be a great way to launch your career.

Summer placements are six to 12 weeks, starting in June

- Building services
- Civil and structural engineering
- Electrical engineering
- Environment consultancy
- Mechanical engineering
- Transport planning

Industrial placements are six and 12 months, starting in September

- Civil engineering
- Electrical engineering
- Environment consultancy
- Mechanical engineering

Get your career started with the right combination of experience and qualifications

Our graduate schemes

Not just another job.

Join our passionate team of planners, engineers, consultants and surveyors and you will be at the forefront of all the action. We know that the first step into the working world can be a daunting experience, so our global network of experts will be there to guide you every step of the way.

Our people say...

Mohammed Abu-Qulbain

Graduate electrical engineer

"After three consecutive summer internships it was evident to me that Mott MacDonald would be an excellent place to begin a prosperous career, due to its values as well as its global recognition."



Which scheme is for you?

Your degree course		Our graduate schemes	We'll support you to meet the objectives of a professional training agreement, such as:	
Mechanical engineering		Mechanical engineering	The Institution of Mechanical Engineers (IMechE) or Chartered Institution of Building Services Engineers (CIBSE).	Turn to page 18
Aeronautical engineering				
Civil engineering		Civil and structural engineering	The Institution of Civil Engineers (ICE) or the Institution of Structural Engineers (IStructE).	Turn to page 20
Environmental engineering				
Structural engineering		Electrical engineering	The Institution of Engineering & Technology (IET) or Chartered Institution of Building Services (CIBSE).	Turn to page 22
Electrical engineering				
Building services		Building services	The Chartered Institute of Building Services Engineers (CIBSE), the Institution of Engineering & Technology (IET) or the Institute of Mechanical Engineers (IMechE).	Turn to page 24
Mathematics or numerical – eg physics				
Geography		Transport planning	The Chartered Institution of Highways & Transportation (CIHT) or our customised training programme designed in partnership with the Institute of Rail Operators (IRO).	Turn to page 26
Geotechnical engineering				
Environmental science		Environment	The Chartered Institution of Water & Environmental Management (CIWEM).	Turn to page 28
Geology				
Ecology		Management consultancy	The Institute of Consulting (IC).	Turn to page 30
Business				
Economics		Quantity surveying	The Royal Institution of Chartered Surveyors (RICS).	Turn to page 32
Quantity surveying				
Construction management		Project management	The Association of Project Managers (APM)	Turn to page 34
Project management				
Other discipline: we may still have roles that suit you. Turn to page 36 for more information		Other vacancies	Aviation, acoustic engineering, BIM, fire engineering, economists, social science, human factors, systems engineering, computer science and many more.	Turn to page 36

Choosing your path

Mechanical engineering

Solving new challenges in smart ways: it's what our mechanical engineers do best.

Our expert mechanical engineers work across a range of sectors. Join us as a graduate and you will have the opportunity to specialise in one of these sectors while designing and delivering sustainable solutions within a passionate, talented and innovative team.

You will play a vital role in getting the most from existing assets by fine tuning operation and safeguarding resilience and durability.

Top three things our graduates like about this scheme:

- “Being part of the Devoll Hydropower project site team in Albania for over three months was a challenge that gave me really valuable experience.”
- “There are amazing mechanical engineers in the company that I can learn from.”
- “My work directly influences the decision as to which option will be adopted and implemented.”

You could be working in one of these sectors:

- Building services
- Railways
- Water
- Energy

This scheme will lead you to chartership of:

The Institution of Mechanical Engineers (IMechE) or the Chartered Institution of Building Services Engineers (CIBSE)

Our people say...

Edgar Perez

Graduate wind energy engineer

“I have done energy yield analyses, operations and maintenance monitoring and wind turbine inspections, so there's lots of variety. One of my most exciting projects was in Uruguay: After just five months in the company, I travelled to South America to inspect two wind farms, which involved climbing to the top of the turbines. When sitting up there said to myself: “can't complain about my office views!” I have also contributed to the development of new technical capabilities within the team. With another graduate from our Paris office, I developed a new software code which allows us to analyse information gathered by wind turbines' SCADA systems faster and more reliably. It was challenging – and very rewarding.”

Carlos Villanueva

Graduate mechanical engineer

“I work on different wastewater treatment projects and feel I'm doing something good. After all, we are a team with one mission: that wastewater does not contaminate the rivers and sea. With continued support and guidance, I am receiving help to become a chartered engineer. In addition, I usually have the freedom to decide which areas I am most interested in. Therefore, I can focus on developing my career the way I want. We use the most advanced technology, which makes it easier and faster to work. Although we work hard, the atmosphere in the office is great, people are very friendly and everybody is able to help whenever you need something.”



Choosing your path

Civil and structural engineering

Our population is growing and our climate is changing – so the work of a civil engineer has never been more essential.

With the opportunity to create better cities, reduce poverty, improve health, and make our environment more resilient against climate change, civil engineering can be extremely rewarding. As a graduate civil engineer, you will have the chance to make a real difference by applying your lateral thinking and using sustainability to create economic and social growth for generations to come. So, are you ready for the challenge?

Top three things our graduates like about this scheme:

- “Access to technology that is ahead of current practice within the industry.”
- “The chance to work on various exciting national and international projects.”
- “Getting to go out on site to supervise ground investigations. After designing the specifics of an investigation, it is fantastic to watch it in action and to see the results.”

You could be working in one of these sectors:

- Transportation
- Water
- Energy
- Geotechnics
- Infrastructure
- Marine
- Structures

This scheme will lead you to charterhip of:

The Institution of Civil Engineers (ICE) or the Institution of Structural Engineers (IStructE)

Our people say...

Christy Cheung

Graduate civil engineer

“I have worked on several interesting projects including Crossrail and Heathrow! The social scene here is active. I’m a member of the Croydon sports and social committee and have organised a variety of competitions and events. They’re great fun and promote team spirit and camaraderie with your colleagues.”

Archibong Kooffreh

Graduate civil engineer

“Soon after joining, I was given the opportunity to work with the highway team in Glasgow on a dualling of A96 highway from Inverness to Aberdeen. The constantly evolving technology used by Mott MacDonald has made for seamless collaboration between colleagues, regardless of location. That means that, as a graduate, you have access to all the help you need.”



Choosing your path

Electrical engineering

Buildings, transport, power and water – as the digital revolution continues to be applied to the provision of our essential services, electrical engineering is in everything and everywhere.

With technology constantly evolving, electrical engineering will continue to play a key role in creating smart infrastructure while helping to deliver better performance. Our graduate electrical engineers work in world class teams to design and deliver sustainable solutions on a variety of projects including power supply, railways, water and buildings. This means you could be part of some of the most essential changes within our society today.

Top three things our graduates like about this scheme:

- “The work is very flexible and there are exciting opportunities to move abroad early in your career as several overseas projects are awaiting kick-off.”
- “I have been exposed to and involved in various aspects of the power, transmission and distribution industry in such a short time frame.”
- “The culture is very much focused on flexibility, collaborative working and knowledge sharing.”

You could be working in one of these sectors:

- Building services
- Railways
- Highways
- Water
- Energy

This scheme will lead you to chartership of:

The Institution of Engineering & Technology (IET) or the Chartered Institution of Building Services Engineers (CIBSE)

Our people say...

Dadiso Musarurwa Ben Brooks

Graduate electrical engineer

Electrical engineer

“Working here has been an exciting challenge. I have grown in my technical expertise and also in my soft skills and project management skills. The cultural diversity, good work environment and great opportunities for growth make Mott MacDonald a great company to be a part of.”

“I have worked on many prestigious projects which range from underground stations in Asia, external lighting schemes in the Middle East to universities, colleges and schools around the UK. Mott MacDonald has multiple career paths for you when you join – you can choose from technical, management or business development roles. Whichever route you wish to take, you always have the full support of your line manager and colleagues. One of Mott MacDonald’s goals is work-life balance and the health and wellbeing for its employees.”



Choosing your path

Building services

It takes creative thinking, a methodical approach and innovative solutions to take a building from an empty shell to a pleasant space to live and work.

It's like conducting an orchestra: building orientation, ventilation, lighting, heating, air supply... our experts play with these factors and more to ensure that buildings are sustainable as well as comfortable to use. Our building services engineers provide innovative design solutions that make a lasting difference for clients, building users and the environment. We've developed a number of industry-leading tools to advance sustainability, including thermal, energy use, carbon and occupancy modelling tools.

Top three things our graduates like about this scheme:

- "I balance multiple projects day-to-day and find learning by working on a real job with a senior engineer is an effective way to build my skills."
- "Since I started, I have been given great opportunities in project management which I would not normally attain at my level."
- "My colleagues make every day in the office enjoyable and I'm continually learning. People are friendly and willing to share their knowledge."

You could be specialise in one of the following areas:

- Mechanical
- Electrical
- Public health

This scheme will lead you to chartership of:

The Chartered Institute of Building Services Engineers (CIBSE), the Institution of Engineering & Technology (IET) or the Institute of Mechanical Engineers (IMechE)

Our people say...

Grant Thompson

Graduate building services engineer

"One of the main reasons I applied to be a building services engineer here is Mott MacDonald's culture, positivity towards achieving a good work-life balance, and the wide range of exciting projects. My experience so far has been very enjoyable and the company never ceases to amaze me. The community is vibrant, energetic and inclusive. It's exemplified by the annual sports day, an exciting event hosted by a different office every two years, in which over 500 people get together to take part in friendly competition and then socialise in the evening. Through it I've had the opportunity to meet staff members from offices around the world."

Mohammed Abu-Qulbain

Graduate electrical engineer

"After three consecutive summer internships it was clear to me that Mott MacDonald would be an excellent place to start a career, due to its core PRIDE values – Progress, Respect, Integrity, Drive and Excellence – as well as its global reputation. My colleagues make every day in the office enjoyable and I'm continually learning. People are friendly and willing to share their knowledge. My biggest achievement so far has been designing the lighting for an indoor rugby pitch. My design was selected and implemented. A great reward!"



Choosing your path

Transport planning

The world of transport is fast moving and constantly evolving – be part of the change.

Efficient transport is the beating heart of a strong economy. Would you like to be one of the driving forces behind everyday journeys? Join us and you'll have the opportunity to team up with our clients to help build intelligent transport systems to move the world forward. With engineering advances and digital technologies continually pushing boundaries in traditional sectors, you will be involved in introducing radical new concepts.

Top three things our graduates like about this scheme:

- "I won a contest to attend the North American graduate weekend in New Jersey."
- "Graduates are supported in expanding their knowledge through seminars and events. I recently attended evening AutoCAD lessons with colleagues to further develop my computing skills."
- "The company has paid for me to become an affiliate member of the Royal Town Planning Institute and I'm working towards chartership. Since I started I have also attended training courses in local plan making and GIS."

You could be specialise in one of the following areas:

- Transport modelling
- Aviation
- Transport planning
- Traffic engineering
- Pedestrian modelling
- Rail planning

This scheme will lead you to chartership of:

The Chartered Institution of Highways & Transportation (CIHT) or our customised training programme designed in partnership with the Institute of Rail Operators (IRO)

Our people say...

Johnathan Fitzgerald

Graduate aviation planner

"Since the moment I joined the aviation team I've been exposed to global projects. Most of my time now is spent on the expansions of Heathrow and Hong Kong International Airport. I have been trained in Airtop, a simulation tool that we use to assess airfield capacity and test the capacity and efficiency of our designs. The aviation team in Croydon is diverse with a wealth of experience in airport masterplanning, airfield engineering, air traffic forecasting and business advisory services. It is simply a fantastic and exciting working environment to be in."

Hannah Jones

Graduate transport planner

"In my two years as a transport planner I have been involved in the masterplan for a major airport and travel demand management for the Champions' League Final. I've led small projects and had regular client contact from my very first week. I enjoy that I get a mixture of office-based work and site visits while also being able to meet clients and stakeholders. Highs: My travel plan for a new hotel and conference centre in north east Scotland won a BREEAM award for sustainability. Outside work, our office has regular curry clubs (with hotness scoring system), a lunchtime running club and days out to the races."



Choosing your path

Environment

With ever greater demand for natural resources and pressure on the environment from the world's growing population, water and environmental management expertise is more necessary now than it ever has been.

Water, sanitation and environmental sustainability are among the fundamental requirements for healthy living. With a fast growing global population and rapid urbanisation, environment engineering has never been more vital. Join our world leading environmental experts and you'll be using sustainability at every step to deliver better outcomes.

Top three things our graduates like about this scheme:

- "The possibility to shape my career in different directions, from project management to technical roles."
- "The variety of projects and different roles performed in each project."
- "Early on in my career I visited our office in New Jersey and I am still in touch with people I met there."

You could be specialise in one of the following areas:

- Ecology
- Environmental consultancy
- GIS
- Air quality

This scheme will lead you to charterhip of:

The Chartered Institution of Water & Environmental Management (CIWEM)

Our people say...

Anna Tuddenham

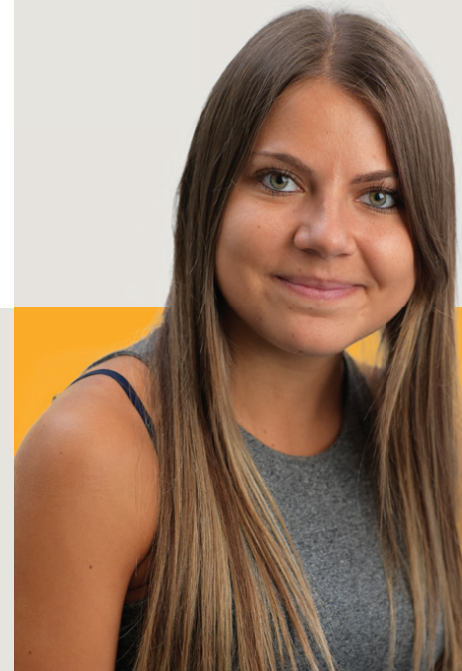
Environmental consultant

"My biggest achievement so far has been co-ordinating the climate resilience inputs for a companywide event at our London headquarters. This showed how cross-cutting company initiatives can help achieve business objectives whilst creating social good and advancing the United Nations' Sustainable Development Goals."

Laura Kor

Ecologist

"The wide variety of projects I have been involved with has allowed me to develop my skills in all my areas of interest. In just seven months I have helped to deliver ecological inputs such as protected species and habitat surveys, preliminary ecological appraisals and habitat regulations assessments for projects involving railways, flood defences and water resourcing."



Choosing your path

Management consultancy

Setting objectives, devising strategy, planning, implementing... Do you have what it takes to attain and sustain success?

If you consider yourself to be a person with an analytical and strategic mind, then this could be the ideal scheme for you. Our management consultants work with private and public sector clients to make improvements, implement change, and manage risk, as well as identifying and fixing problems. We're exceptional in our field because our management consultancy expertise is backed by our engineering disciplines. Management consultants play a major part in achieving positive change.

Top three things our graduates like about this scheme:

- "My first three years have allowed me to work on a number of international assignments in places such as Germany, Albania and Italy."
- "The technology we use makes my day-to-day role far more effective and enjoyable as I can easily connect with colleagues globally."
- "Graduates undergo on-the-job and classroom training within the first four to five years of their career, with a Certified Management Consultant exam at the end to gain formal professional accreditation."

You could be working in one of these sectors:

- Infrastructure finance
- Water and environment
- Education
- Government

This scheme will lead you to chartership of:

The Institute of Consulting (IC).

Our people say...

Callum Coleman

Management consultant

"One of the great things about being a management consultant in a predominantly technical consultancy is the diverse perspectives and approaches to problem solving that are shared between colleagues. There is always someone on hand who can help resolve technical queries or issues you might have, meaning you are constantly learning and applying new knowledge to add value for your clients."

Reema Shah

Graduate management consultant

"It's been an exciting career so far: I've gained an overview of the business by working in the buildings, transport, water and education sectors. My daily activities change all the time, from focusing on monthly reports, to business strategy and pulling together bids. The best thing about my job is being able to talk to people from different disciplines and across the range of seniority. The work culture is exciting as I am surrounded by people who really enjoy what they do and spread that enthusiasm. I have enjoyed the social aspect as well, with dinner clubs, social sports and the Christmas party!"

Choosing your path

Quantity surveying

It's a numbers game: cost efficiency is the difference between a project's success and failure.

From a project's inception, right through to completion, there will always be costs and calculations involved. Our passionate team of quantity surveyors, cost management consultants and cost engineers is skilled in accurately predicting the capital cost of asset investment programmes and projects. They are constantly using their logical and practical thinking to ensure that our clients' business needs are being met. It takes a methodical approach to solve problems of this nature – have you got what it takes?

Top three things our graduates like about this scheme:

- “With constant access to online portals, communication and collaboration is greatly improved between colleagues.”
- “I attended a Graduate Weekend in the USA where I had the opportunity to not only meet the graduates from that region but to learn about the projects they are developing.”
- “After just five weeks I developed a good understanding of the project I was working on.”

You could be working in one of these sectors:

- Water and environment
- Property
- Transport
- Energy

This scheme will lead you to chartership of:

The Royal Institution of Chartered Surveyors (RICS)

Our people say...

Victoria Clapp

Quantity surveyor

“I have been here since 2016 and I'm on my way to being a fully qualified quantity surveyor. I'm extremely proud of my progress and it's thanks to the support and guidance I've been given. My role, which involves projects in the defence and environment sectors, is varied and interesting. We have a very social team here – we regularly go out for work meals and pub quizzes which is a great way to encourage team bonding. We are even in the process of learning to row thanks to one of our team members who is an avid rower!”

Chris Irving

Graduate quantity surveyor

“My favourite among a number of exciting projects has to be the restoration of Alexandra Palace's theatre auditorium in north London. It used to be one of the BBC's major broadcast centres, but has been closed to the public for decades, so it was great to be part of the grand reopening. Day-to-day activities can range from on-site valuations to principal and client meetings. Although we work extremely hard to ensure that project deadlines are met, relationship building is always encouraged through lots of sports and social events with both clients and colleagues.”



Choosing your path

Project management

An efficient project manager is the difference between the success and the failure of a project. Do you have what it takes?

Delivering outcomes, meeting deadlines and achieving objectives – our expert project managers work for clients in all sectors of the economy to ensure that projects are completed successfully. Economic austerity may be the ‘new normal’ but there’s a global infrastructure list like never before. Our graduates thrive on gaining diverse experience and being part of an award-winning global team.

Top three things our graduates like about this scheme:

- “I have been given the chance to sit and pass my CSCS examination. I am also being supported by my line manager to obtain APMQ qualification.”
- “There has always been an opportunity to go outside of my comfort zone but it’s developing me as a professional and it doesn’t go unnoticed.”
- “Working here is a fantastic experience for me because all of the managers and my colleagues are extremely supportive and encouraging.”

You could be working in one of these sectors:

- Property
- Transport
- Water and environment
- Energy

This scheme will lead you to chartership of:

The Association of Project Managers (APM)

Our people say...

Pasquale Bucciaglia

Graduate project manager

“Designing major infrastructure projects that shape the world we live in is the dream of many young professionals. For the past two years, that dream has been my day-to-day reality. I’m part of the project management team for London’s Crossrail, now known as the Elizabeth Line. When it’s complete this project will surely shape the way we commute and has certainly changed the way we design public transportation. It’s an astonishing experience that nurtures my ambitions and has made me proud of what I do.”

Hazel Easton

Graduate project manager

“A couple of weeks after I started I was seconded to work on a fast-moving project in Carlisle and have been here ever since. On a typical day, I liaise with contractors and approval authorities on designs and schedules. I attend everything from design workshops for bridges to progress meetings. Since joining Mott MacDonald I have achieved my postgraduate certificate in civil engineering and construction management and through the project have gained my construction skills certification scheme (CSCS) card with full marks.”



Choosing your path

Other opportunities

We're a diverse organisation. If one of our main schemes does not offer you the career you have in mind, we may well have more graduate opportunities that are right for you.

Additional disciplines we will be recruiting for this year are:

- Aviation
- Acoustic engineering
- BIM
- Fire engineering
- Economics
- Social science
- Human factors
- Systems engineering
- Computer science
- Engineering geology
- Process engineering
- Aeronautical

And many more...

Keep an eye on our graduate pages and social media, as we will be advertising roles there as they arise.

Our people say...

Pablo Marquez Belzunce

Graduate engineer

"Uruguay, Argentina, Peru, Belgium, the Netherlands, Mongolia and Spain – they're the countries I've worked in so far. My world tour includes the first ever wind farm installed in Mongolia, and the first ever offshore wind farm in the USA. I've gained a lot of responsibility. In my second year I was managing projects with complete responsibility over the work carried out and contact with clients. Today, my responsibility has grown exponentially along with the size and complexity of my projects. I love the culture of my home office in Brighton which offers great flexibility with my work hours and constant social activities that have made me feel welcome since the first day."

Where are they now?

Luke Coffey

Senior planning consultant

Having a clear idea of just where your career could take you can be extremely useful. After leaving university life behind, it's sometimes difficult to envision exactly what your journey could look like and just how far you could go.

Luke decided to take the graduate scheme route after leaving university. Take a look at his journey to becoming a senior planning consultant and the triumphs he has had along the way. Are you ready to start mapping out your journey?

A step into the working world

I started out as a graduate planning consultant with an independent planning consultancy based in Birmingham and earned my Masters degree simultaneously. In the early stages of my career I gained experience working with public and private sector clients in transport and retail.

The knowledge I obtained in the first few years of my career helped me gain the competence and versatility I needed to become a chartered member of the Royal Town Planning Institute (RTPI) in 2013, following the successful completion of my Assessment of Professional Competence.

The next step

I joined Mott MacDonald's Birmingham office in 2015 with the aim of assisting with growing a planning team. My portfolio of projects was broad, encompassing major transport and infrastructure, housing, commercial and industrial developments, evidence base preparation and education schemes.

My experience at Mott MacDonald so far

There's a lot of interesting and varied work to do, and there's no doubt it can be fast-paced, but staff welfare and work-life balance are of paramount importance. The work culture is flexible and friendly. Each office has a dedicated sports and social committee that organises events throughout the year to bring people together in an informal environment.

The company invests time in the development of employees and you always feel supported throughout your time to pursue other extra-curricular activities that will enhance career development. In my time at Mott MacDonald, I have been fortunate to be given the opportunity to become chair of the RTPI West Midlands Young Planners Network, guest lecturer at Birmingham City University and the University of Birmingham and participate in the City Builder Academy with MADE.

A summary of my career to date

- 2007-2010: graduated from University of Birmingham with an honours degree
- 2010-2012: graduated from University of Birmingham with a Masters degree
- 2011-2015: graduate planning consultant – senior planning consultant
- 2015-present: senior planning consultant

My qualifications and accreditations

- Chartered member of the Royal Town Planning Institute (RTPI)
- MSc in Urban and Regional Planning
- BSc (Hons) in Geography and Planning
- Chair of the West Midlands Young Planners Network
- RTPI West Midlands Young Planner of the Year in 2016
- RTPI National Young Planner of the Year for Planning Excellence 2017

Application process

Applying for your first job after university can be extremely stressful. We understand this. That's why we aim to make our application process as straightforward as possible. Unlike most graduate recruiters, we do not have assessment days. Instead, you will be invited to an interview with your future team where you'll have the opportunity to see the environment that you could be working in.

1

Application form
(where we find out
more about you and
your passion for the
sector applied for)

2

Online numerical,
verbal and inductive
reasoning test

3

Interview with
your future team

4

Offer

Please keep an eye on our website where individual vacancies will occasionally be advertised.

If you have any questions, queries or simply need some assistance with your online application, do not hesitate to contact the graduate recruitment team at: graduate.recruitment@mottmac.com or 020 8774 2084.

For the latest Mott MacDonald news and information about our schemes, follow us on Twitter [@MottMacFuture](https://twitter.com/MottMacFuture)

Deadline: 13 November 2017

A great place to work

Don't just take our word for it

In the last year our people and projects have won nearly 80 awards, and we've picked up these accolades for recruitment, development and workplace culture too.



Competition time

Take our sustainability challenge

As a business, sustainability is important to us. Our vision is to be the leading global partner in advancing sustainability. We seek to use our ingenuity to deliver lasting value for our customers, our people and the communities we work in. Do you think the way we do? That's what we'd like to find out...

Competition details

- We like to look at challenges from a fresh angle and we want to see if you do too.
- Using a single photographic image, show us what sustainability looks like to you. We want to see how creative you can be. Help us look at things from a different point of view.

Submissions

- The competition is open to all eligible individuals*. All images can be submitted via Twitter using the hashtag [#MottMacComp17](#) or via the email address hr.marketing@mottmac.com
- We will post regular updates about the competition on our early careers Twitter channel [@MottMacFuture](#) so make sure you're following us!
- All images submitted must be your own original work and you must ensure that any images submitted do not infringe the copyright of third parties and have been taken with the permission of the subject of the photo.
- By submitting an image, you agree that we may use that image in any updates about the competition.

Judging and winning announcement

- The submissions will be judged by a member of our sustainability team who will be looking for the best image that we think shows sustainability from a different point of view.
- The winner will be announced on 18 December 2017 on Twitter and Facebook.
- We will contact the winner personally as soon as practicable after the announcement date, via Twitter or the email address provided with the competition submission.

What's in it for you?

- For one week, the lucky winner will be given the opportunity to be paid to shadow a team of their choice**.
- It doesn't stop there. You will get the chance to have a Q&A with the experts themselves: our sustainability team.

Good luck! We're looking forward to seeing what you've got.

Data protection and publicity

- If you are the winner of the competition, you agree that we may use your name (including Twitter handle), image and town or county of residence to announce the winner of this competition and for any other reasonable and related promotional purposes.
- By entering the competition, you agree that any personal information provided by you with the competition entry may be held and used only by us to administer the competition.
- Our privacy policy sets out how we may use your personal data.

Closing date: midnight on 10 December 2017

*To enter, you must have the right to work in the UK and be able to provide us with evidence of this if requested.

**We will contact the winner to discuss their career aspirations. From there, we will, be able to find a placement, in one of our UK offices, that is best suited.

Unlocking creativity

Be part of a dedicated team delivering long-lasting value at every stage of a project. Working in all areas of infrastructure, management and development, we look at challenges from a fresh angle, creating solutions that improve people's lives.

We are Mott MacDonald.

We open opportunities with connected thinking.

Twitter: @MottMacFuture

Facebook: @mottmacdonaldgroup

LinkedIn: Mott MacDonald

Instagram: @mottmacgroup

YouTube: Mott MacDonald

graduate.recruitment@mottmac.com

020 8774 2084

mottmac.com/careers/uk-graduate