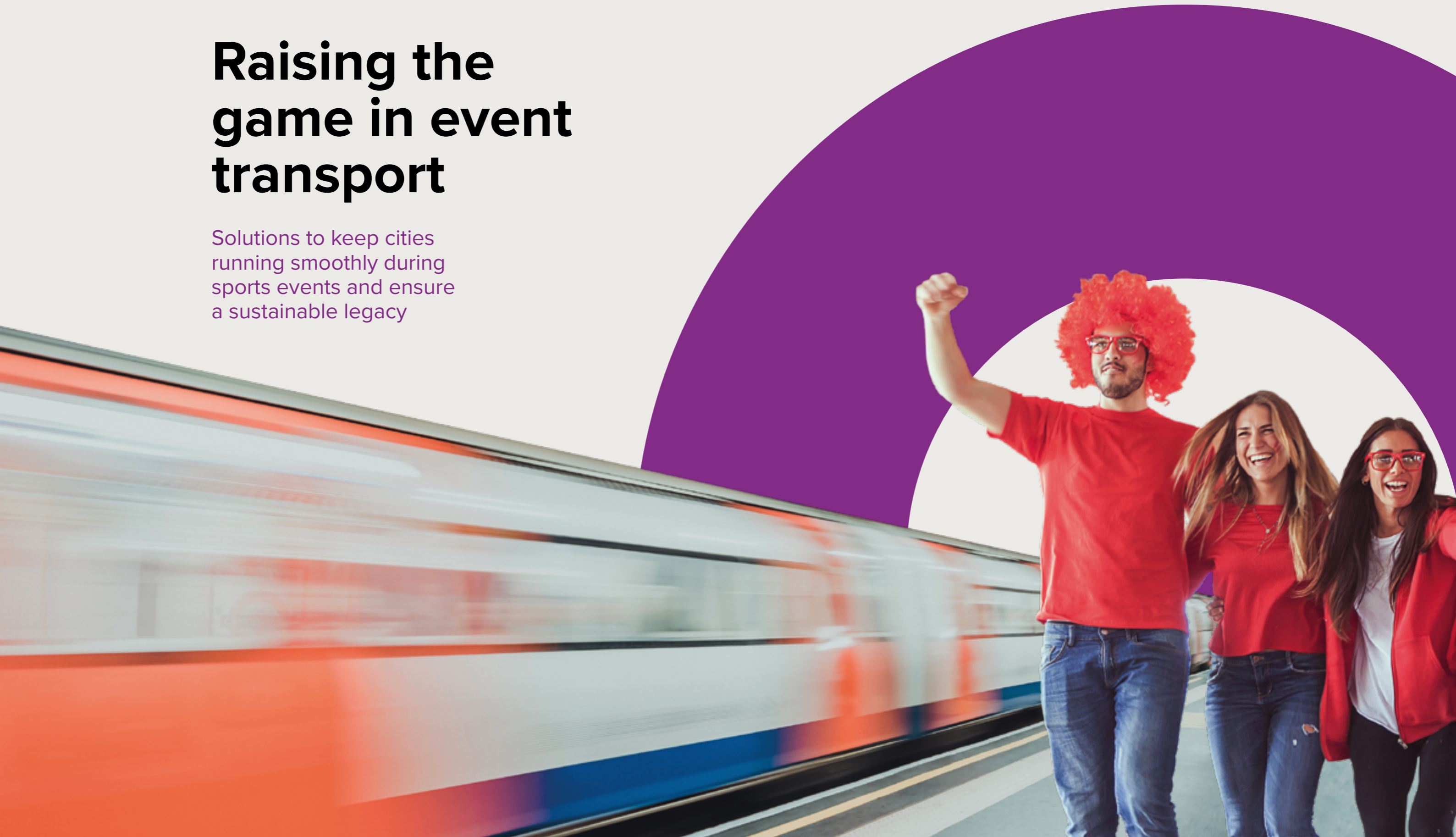


# Raising the game in event transport

Solutions to keep cities running smoothly during sports events and ensure a sustainable legacy



## A successful event transport strategy will be...

great for fans

innovative

sustainable

and leave a legacy



### Getting to the game

The sense of anticipation has been building for months, even years. Now it's the day of the big event and we can't wait to get to the stadium to see our sporting heroes in action.

We don't just want to arrive on time – we expect our journey to and from the venue to be safe, comfortable and affordable. Our journey is part of the overall experience.

### Benefits for communities

If we live and work locally, we don't expect our plans and routines to be delayed or disrupted by the influx of fans and spectators. As taxpayers, we expect investment in new transport infrastructure built to deliver an event to provide value for money and lasting benefits for our communities.

### Fulfilling the host's vision

For the host city, region or country of a major sporting event, meeting expectations for seamless mobility, minimal disruption and social and economic outcomes are crucial to delivering a commercially successful event that will enhance its national and international reputation as a place to invest, work, live and visit.

These high-profile events are becoming greater in scope and scale, heightening the twin challenges facing every host: to provide an efficient and sustainable mobility service for visitors, competitors and officials, and keep transport systems moving and working for residents, commuters and businesses.

### The key to success

Mott MacDonald has been making its mark on international sports for more than 75 years, with leading roles on some of the world's most spectacular events.

Our specialists develop transport strategies to ensure all stakeholders can expect a smooth and reliable travel experience. Recognising this is key to the success of any sports event, and the success of any host city bid.

We know the greatest events are the most memorable. That is what inspires us to do what we do – delivering transport solutions to enable these events to happen, helping to create memories that matter to millions of people around the world.

Our aims are always aligned with the four core objectives of every host city's transport strategy:

- 1. Customer experience** – During an event a host city must provide the optimum travel experience to both visitors and everyday users of its transport systems.
- 2. Innovation** – Every event and every host city environment is unique, presenting new challenges that require bespoke and innovative solutions.
- 3. Sustainability** – Transport solutions must be sustainable and deliver the best value for money for investors and taxpayers.
- 4. Legacy** – Each event must create a strong transport legacy that increases take-up of sustainable modes of travel and makes communities better places to live, work and play.

# One team, one goal

If you're looking for an event transport solution, whatever your needs and challenges, and no matter where in the world you are, we'll align the right combination of capabilities and experience to meet your requirements.

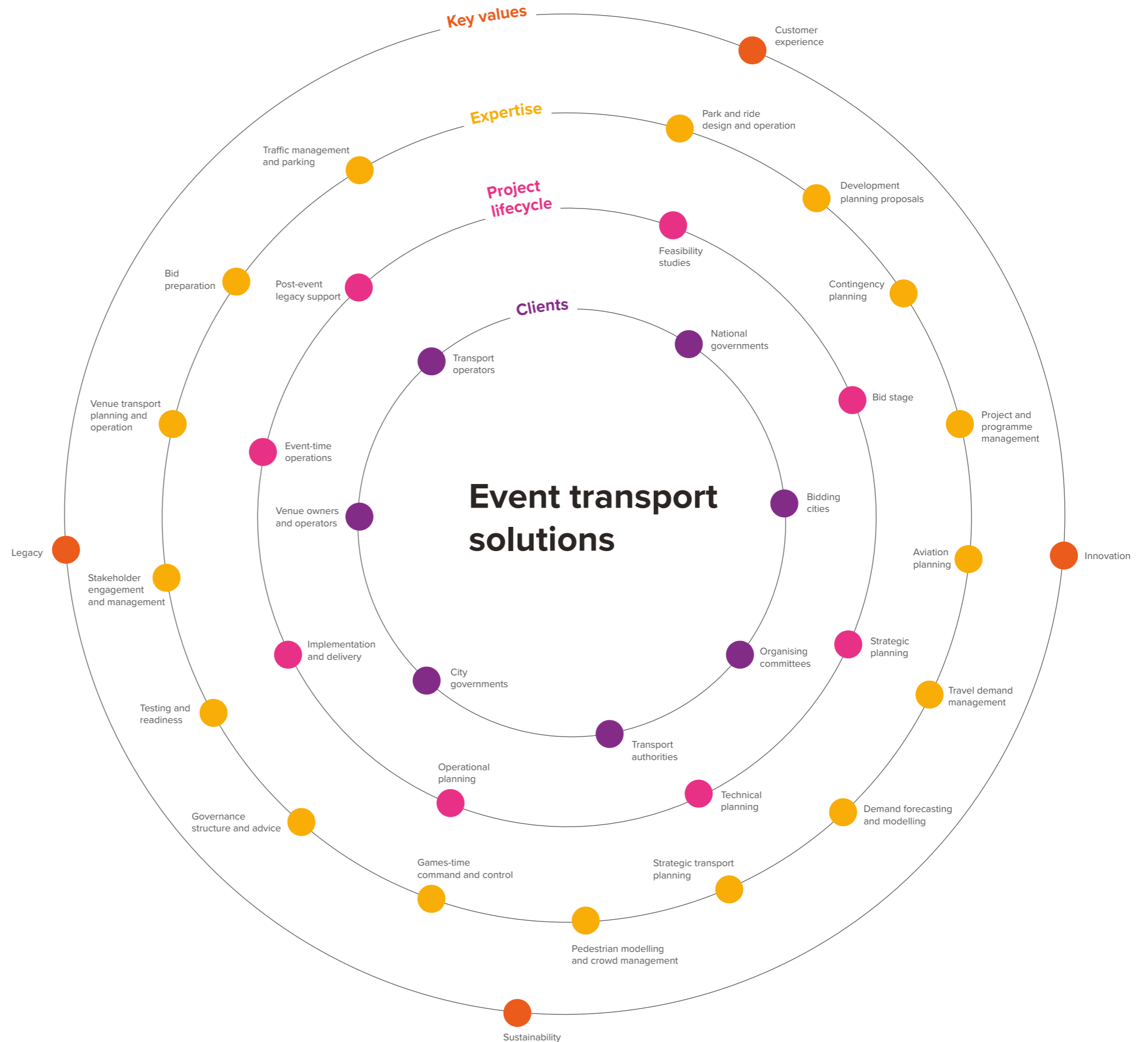
We work as one team centred around a single goal – to deliver results for our clients and their clients. We're joined up across all sectors and geographies, giving you access to an exceptional breadth and depth of expertise in transport planning and management for major events.

## Decades of experience

Our services are founded on decades of designing and delivering a wide range of stadiums, sports infrastructure and urban transport projects around the world.

This means that our advice is always pragmatic and technically sound, and you can rely on us at any stage of a project to find a tangible means of enhancing a host city's event delivery performance and legacy.

It is our detailed understanding of all phases of the event lifecycle, from planning to operation and post-event transition, that enables us to give the best-informed advice and create the optimum solution. This makes us a trusted partner who can stay at your side – adding value and helping to deliver – from start to finish.



# Customer experience



## Planning smoother, safer journeys and giving travellers more choice

### Safe and efficient transport

The commercial and reputational success of major international events depends largely on the safe and efficient transport of people and goods. The ability to run such events is invariably unproven in the host city, region or nation and the movement of thousands, or even millions, of visitors will place extraordinary pressures on the transport networks.

Effective transport planning and management will ensure that the spectators, workforce and competitors are all in place on time, that venues are supplied and replenished efficiently, and that the visitor experience is not marred by a poor journey.

### Transport planning expertise

For multisports and multiple venue events, meticulous transport planning at local, regional and national scales is crucial from the beginning. Based on proven experience, we know how to help you to plan for these situations.

We work closely with clients to plan, build and operate a transport network able to handle what is often the most challenging logistical exercise ever undertaken by a city.

Our range of transport services includes advice on all aspects of strategic planning and governance, as well as the operation, assurance and integration of multiple delivery programmes. We can place key individuals in the event's organising committee and transport agencies, helping to build collaborative multi-agency delivery teams.

### Travel demand management

Travel demand management (TDM) can ease the pressure on transport networks caused by increased visitor numbers. TDM is all about influencing people's travel behaviour through a combination of infrastructure availability and targeted public information.

Our TDM solutions provide cost-effective ways to encourage residents and commuters to remode, retime, reduce and reroute their travel during the event in order to create capacity on the host city's transport network at key times. The outcome will be that people get to where they need to go with less cost and less impact on the environment.

### How we add value STEPS

STEPS (Simulation of Transient Evacuations and Pedestrian Movements) populates a 3D computer model of an actual or proposed environment with virtual people, producing a realistic, easily understood simulation of crowd behaviour.

It can model multiple scenarios, including ingress, half-time break, normal egress and emergency evacuation, covering vertical circulation, clearance times of tiers and levels of crowding on concourses.

STEPS permits transport planners, fire engineers and architects to evaluate building designs and operational processes in a robust and scientific manner, ensuring a smooth and safe experience for all.



## Footfall and football: safety is the goal



**Project**  
Anfield Stadium

**Location**  
Liverpool, UK

**Client**  
Liverpool FC

**Expertise**  
Pedestrian modelling and crowd management, venue transport planning and operation, traffic management and parking, stakeholder engagement and management, development planning proposals

Predicting how crowds behave at football matches is a major issue when it comes to planning stadium design or reconfiguration. How people arrive and enter, how they behave at half-time and how they would react to an emergency are all critical factors.

The redevelopment of Liverpool FC's iconic Anfield Stadium to add 8500 seats presented such a challenge. Working with KSS Architects, our pedestrian modellers used our in-house

pedestrian modelling software tool STEPS to undertake a detailed study of how people would move around under various scenarios.

The study compared the existing stadium layout with those of the construction phase and the final main stand. We identified potential problem areas leading to the redesign of vomitories and reconsideration of the proposed capacity as well as the repositioning of retail outlets.

We also prepared an event management strategy in support of a planning application to enable Anfield Stadium to host up to six concerts or other major events annually.

Our strategy incorporated a range of interventions, including temporary drop-off and pick-up areas, shuttle buses between the stadium and public transport hubs, and enhanced local walking routes. The project required extensive consultation with key stakeholders.

## Proactive planning keeps city moving

# 750k

spectators modelled by our transport demand analysis tool

Glasgow City Council recognised that effective travel demand management was imperative to the success of its hosting the inaugural European Championships.

The multisports event was expected to attract 750,000 spectators, supported by thousands of staff and volunteers, so careful travel planning was required to ensure the city kept moving.

We developed a transport demand analysis tool

which forecast spectator and workforce demand on key rail and bus routes between the city centre and venues for the duration of the event.

Service or capacity constraints were flagged in a user-friendly format, which also provided supporting information such as event schedules, mode split, arrival and departure profiles, and estimated unserved demand. The results informed travel demand management

and communications strategies, which included the use of social media to influence people's travel.

Our team supported the transport co-ordination centre during the event by monitoring any travel issues and identifying solutions in real time.

The championships were hailed a success for the city with no serious incidents recorded, which was attributed mainly to the proactive transport planning approach.

**Project**  
European Championships 2018

**Location**  
Glasgow, UK

**Client**  
Glasgow City Council

**Expertise**  
Demand forecasting and modelling, travel demand management, games-time command and control



# Innovation



## Innovation in transport planning comes as standard

### Bespoke solutions

Planning for big events has never been easy. Now, as we face a potential transport future that combines connected and autonomous vehicles, demand-responsive transport, and mobility as a service, the task can seem even more challenging.

Our experts will help you to confidently chart a course into the future of mobility and make the most of the opportunities offered by disruptive thinking and new technologies.

While best practice transport planning and management can determine the success of any event, each event presents unique challenges. We consider all events within their wider context and setting, and we recognise that each transport planning and management challenge is a one-off and requires bespoke technological solutions.

### Smarter travel

At the heart of any successful large event is the ability for transport operators to respond swiftly and appropriately to unforeseen events or incidents.

We have developed smart technologies that, for example, allow transport operators to identify and share real-time data on all incidents on a common platform. This ensures a uniform understanding of any incident by all agencies and the co-ordinated implementation of contingency solutions to get traffic on the move again with minimal delays.

### Visualisation and virtual reality

Planning for the way pedestrians and traffic will flow in and out of venues is made easier by visualisation and 3D virtual reality tools. We use microsimulation modelling tools with in-built 3D capability. These produce visualisations that provide partners, clients and stakeholders with a detailed understanding of how proposed designs will look and function.

Using a combination of microsimulation modelling, specialist animation and 3D rendering software, we can create an immersive experience that includes sounds and wayfinding to help orientation in the virtual model and enhance the realism of scenarios such as an evacuation.

### How we add value

#### Merlin

Merlin, our event incident management tool, is designed to keep the public travelling smoothly during a major event.

It allows decision makers to easily share critical real-time information through a secure web-based platform, supporting transport co-ordination and communications for all event stakeholders.

Merlin's GIS-based interactive map enables operators to rapidly locate incidents and deploy resources where they are most needed. Multiple users can update the incident in real time, allowing an accurate picture to be maintained as the situation develops.



## Effective incident management in Baku



# 750

incidents logged and managed by our GIM system in Baku

**Project**  
2015 European Games

**Location**  
Baku, Azerbaijan

**Client**  
Baku European Games Organising Committee

**Expertise**  
Games-time command and control, testing and readiness, contingency planning

As the host city of the inaugural European Games, all eyes were on Baku. It was crucial the city had effective systems in place to ensure the smooth running of the event.

We customised Merlin, our event incident management tool, to meet the organising committee's requirements for an effective games incident management (GIM) system. This included geographic information system (GIS) mapping software, allowing users to quickly pinpoint, create and manage incidents as well as gain a spatial operational awareness of related incidents.

The GIM system was used extensively by 150 operators to log, triage,

plan, manage and monitor incidents. This covered games preparation, the event itself, the closing ceremony, and the subsequent demobilisation and decommissioning phases. More than 750 incidents were logged and managed using the system. Our team provided operational support for the GIM system throughout the games, meeting all key performance indicators for call handling.

We were also responsible for business continuity planning, testing and readiness support, helping to develop, and having representatives leading, the command, control and co-ordination (C3) centre for games-time incident management.

## The sky's the limit

**Project**  
Strategic aviation services

**Location**  
Worldwide

**Client**  
Various

**Expertise**  
Aviation planning, demand forecasting and modelling, contingency planning

Mott MacDonald is one of the world's most experienced aviation consultancies and we have extensive experience of helping airports to prepare for significant increases in passenger numbers during major sporting events.

In support of the 2010 FIFA World Cup, we undertook detailed demand forecasting, capacity assessments and pinch-point analyses of facilities (both terminals and stands) at six airports in South Africa. Our study aided the implementation of effective demand management, slot control procedures and contingency planning.

For Euro 2012 in Poland and Ukraine, we developed and implemented airport slot controls for four Polish airports, along with demand forecasting and schedule management procedures. These included a slot and flight plan matching process and the suspension of flight plans for unauthorised operations in co-operation with Eurocontrol, the body that co-ordinates air traffic control for Europe.

For London 2012, we implemented slot controls at 40 airports and airfields in south-east England. We also provided effective demand management

within the London air traffic control area, protecting business-as-usual air travel during both the Olympic and Paralympic Games.

Ahead of the 2022 FIFA World Cup in Qatar, we have produced a user-oriented strategic document, relevant to all stakeholders, to help identify the facilities, capabilities of airport systems and policies needed to meet the forecast increases in passenger volumes.

Slot controls implemented at

# 40

airports and airfields for London 2012



# Sustainability



## Affordable outcomes that are good for communities and the environment

### Sustainable and robust

A sustainable and robust transport strategy – in which transport challenges and solutions for major events are set out – is one of the key criteria that organising bodies, from local authorities to the International Olympic Committee (IOC), consider when reviewing bids from candidate host cities.

Such a strategy will ensure the efficient delivery of infrastructure, networks, governance, co-ordination and information exchange to meet event demand, while making sense for day-to-day transport network operation.

Meeting the transport requirements of big events must be accomplished without compromising the communities and the environments in which they are set. In our experience, it is absolutely possible for host cities to develop and deliver an environmentally sustainable and socially inclusive transport strategy.

Such a strategy can be integral to a city's or nation's long-term objectives to become carbon-neutral by moving people and goods more cleanly and efficiently.

### Cost-effective solutions

The IOC's Agenda 2020 and Commonwealth Games Federation's Transformation 2022 documents set out the need to recognise the increasing cost of hosting large sports events, and the need to learn from experience to avoid overspend while delivering games-time solutions and long-lasting legacy benefits.

We help our clients to be ambitious and realistic in what they want to achieve, making sure the needs of people – visitors as well as those who live and work in a host city, region or country – are catered for by planning and delivering sustainable transport projects.

Our unrivalled record in bringing world-class events to fruition is based on working closely with host cities to achieve transformative outcomes through innovative, cost-effective transport solutions that provide a return on investment as well as social, economic and environmental benefits.

### How we add value

#### Transport planning toolkit

We have worked with the UK's Foreign and Commonwealth Office to produce a transport planning toolkit to assist event organisers.

The document is based on best practice which we have identified from creating infrastructure and planning transport operations for sporting events around the world. Recognising that different host cities have unique transport challenges, it highlights the fundamental issues to consider in the early stages of planning an event.

The toolkit also contains insights and guidance on maximising social, economic and environmental outcomes to create a lasting legacy.





## Football fans enjoy easy journey to final

### Project

UEFA Champions League Final 2017

### Location

Cardiff, UK

### Client

Welsh Government and Football Association of Wales

### Expertise

Demand forecasting and modelling, strategic transport planning

The 2017 UEFA Champions League Final between Juventus and Real Madrid was the largest single sporting event ever held in Cardiff. The Welsh capital was also the smallest city to have hosted the final.

We provided advice on strategic access to and from the Principality Stadium, identifying and devising practical solutions to key transport challenges. These included the limited accommodation close to the stadium, the timing of the event during a school half-term weekend, and thousands of visitors arriving from cities and airports outside Cardiff as far away as London and Manchester.

Likely travel demand for the event was forecast for a range of scenarios and tested using the South East Wales Transport Model and a bespoke microsimulation model that we created using PTV Vissim, the world's most advanced and flexible traffic simulation software.

The Welsh Government, Football Association of Wales and UEFA used our findings to work with service providers to implement a number of practical solutions: extra trains and coaches, a park and ride service, and the development of an advanced app for managing travel demand for the event.

This app enabled bespoke real-time travel alerts to be sent to ticket-holders' mobile devices, providing them with summary information on the best times to travel by key modes, based on our demand forecasting and modelling.

Despite record footfall in the city over the weekend (more than 300,000 visitors), traffic ran smoothly and there was high use of public transport, particularly rail and coach services from regional airports. In total, this successful event helped to deliver a £45M economic boost to Cardiff's economy.



# 300k

visitors set a new footfall record for Cardiff

## Transport studies support stadium upgrade



### Project

Adelaide Oval Stadium Redevelopment

### Location

Adelaide, Australia

### Client

Adelaide Oval Stadium Management Authority

### Expertise

Development planning proposals, stakeholder engagement and management

The Adelaide Oval, one of the most picturesque cricket grounds in the world, needed a major refurbishment to maintain its commercial viability.

The stadium's seating capacity was doubled to 50,000, enabling it to stage both cricket and Australian rules football matches, and travel planning was essential to support the redevelopment.

We carried out a comprehensive transport assessment, encompassing multimodal

transport infrastructure reviews, modal share demand forecasting, parking audits and travel operation strategies. We also made recommendations for implementing and monitoring a travel plan.

Then we prepared an integrated pedestrian and traffic event management plan, which was structured for various capacity scenarios, and organised workshops with public transport operators to nurture shared ownership of the plan.

# Legacy



## Building a legacy that lives on long after the crowds have gone

### Strategic vision

The range of services that we provide, from feasibility studies and bid preparation to delivery and event-time operations, gives us the appreciation of an event's scale so we don't lose sight of the end goals, not least of which is to create a long-lasting legacy.

Our legacy planning will aid the development of a strategic vision or masterplan for a host city post-event. The same techniques developed for the intense demand of week- or month-long sporting events are applied every day by our teams to find long-term solutions to the growing challenges cities face on urbanisation, population growth and climate change.

### Social and economic stimulus

The opportunity that event hosting brings to create a powerful legacy can be truly once-in-a-generation, with cities, regions and whole countries able to benefit from the need to masterplan infrastructure development for games-time and beyond.

Global media coverage, brand reinforcement, increased visitor numbers and state-of-the-art stadiums are some of the immediate benefits. The preparation for, and delivery of, an event will also support urban regeneration and job creation, bringing direct economic benefits across all scales for all stakeholders.

We understand the integral role transport plays in capturing these opportunities and creating a legacy that host cities and countries can be proud of.

### Travel behaviour change

Hosting major events presents cities with the opportunity to encourage its citizens to use more sustainable modes of transport. This can have lasting positive impacts if a significant proportion of residents continue to leave their cars at home and use alternative forms of transport, thereby reducing congestion, improving air quality, and contributing to healthier lifestyles and improved wellbeing.

We can advise you how to plan post-event initiatives that will help to capture and sustain changes in travel behaviour for the lasting good of communities.

### How we add value FUTURES

We have developed a toolkit called FUTURES – Future Uncertainty Toolkit for Understanding and Responding to an Evolving Society – which can help host cities to chart a confident pathway to achieving the desired outcomes for their event.

FUTURES is designed to support more resilient decision making, particularly at the strategic planning stage. It will allow you to plan for the future legacy you and your communities want, helping to ensure policy-making and investment decisions realise the collective post-event vision.

The FUTURES approach will support national agencies and operators, regional, local planning and highway authorities, and developers.



## London 2012 leaves lasting legacy

### Project

2012 Olympic and Paralympic Games

### Location

London, UK

### Client

Olympic Delivery Authority, Transport for London, Heathrow Airport Holdings

### Expertise

Park and ride design and operation, travel demand management, games-time command and control, contingency planning

Hosting the Olympic and Paralympic Games is an enormous challenge for any city. The challenge for London was multiplied by having venues in sensitive locations stretched across one of the busiest cities in the world.

An integrated systems approach to spectator transport enabled us to design and deliver efficient transport services for spectators and athletes, while minimising disruption to residents and businesses.

We used a single platform for planning, designing and managing the park and ride (P&R) system, and planned

and managed 32 P&R sites plus key transport routes and operations serving Olympic venues across the UK.

We supported the design, implementation and operation of the Olympic Route Network and provided the technology behind the transport co-ordination centre's incident and event management system.

The legacy from London 2012 includes improvements to walking and cycling routes and proven travel demand management techniques that help to reduce traffic congestion on the city's busiest routes.

“Mott MacDonald ably supported us in preparation for the 2012 Olympics. They've been figureheads in an extraordinary venture.”

Transport for London



# 55k

athletes and officials were transported by a fleet of 1500 coaches and 4000 cars using 48km of dedicated highways

## Plain sailing for island's transport network

### Project

2017 America's Cup

### Location

Bermuda

### Client

AECON Group Inc

### Expertise

Aviation planning, venue transport planning and operations, stakeholder engagement and management



When Bermuda hosted the 35th America's Cup, the competition's success and the island's reputation for hosting future events depended on delivering an efficient transport experience for spectators while minimising the impact on business-as-usual traffic.

Given the small size of the island and its limited road network, our specialists recognised that the transport needed to be agile to react to one-off increases in passenger demand.

Our solution included preparing a transport operations plan for

Bermuda's international airport to ensure teams, event support staff, members of the media and spectators flying in and out could travel to and from the airport efficiently and easily.

It was also designed to minimise the impact of this additional demand on local residents, business travellers and other visitors using the airport during the event.

By closely involving the various transport stakeholders in the planning process, we designed a safe, effective and responsive transport strategy.

## Transport plan key to Rugby World Cup bid

**Project**  
South Africa 2023 Rugby World Cup bid

**Location**  
South Africa

**Client**  
Access Management Services

**Expertise**  
Bid preparation



When South Africa launched its bid to host the 2023 Rugby World Cup, the bid team called on us to provide travel and transport advice.

We analysed the country's transport network to establish whether more infrastructure would be required to provide extra capacity during the event, and then developed the outline transport plan for spectators travelling between venues and host cities.

Our team drew on local knowledge they gained during South Africa's successful staging of

the FIFA World Cup in 2010 to ensure the bid harnessed the strengths of the existing transport network, which would help to deliver value for money.

The transport plan seamlessly tied into the bid's overall vision of creating a long-lasting legacy, a key factor in determining that bidding for and hosting the event would be in the best interests of the rugby-mad nation.

Although the bid was ultimately unsuccessful, it was ranked the best one by an independent panel of experts.

## Stadium upgrade will keep Eagles flying high

**Project**  
Selhurst Park

**Location**  
London, UK

**Client**  
Crystal Palace FC

**Expertise**  
Development planning proposals

The redevelopment of the main stand at Selhurst Park, home of Crystal Palace FC, will increase its capacity from 5400 to 13,500, and the stadium's total capacity to more than 34,000.

We were appointed by the club, nicknamed The Eagles, to provide transport consultancy services to support the complex planning application for the expansion.

Using experience gained as a consultant to other Premier League clubs, we advised Palace on a transport strategy for the increased spectator numbers to help secure planning approval.

We produced a suite of transport documents – transport assessment, a travel plan, a pedestrian environment system review and outline construction logistics plans – to support the application.

Various surveys were undertaken to inform these documents, including parking beat, public transport occupancy, and spectator and staff travel surveys. Our team worked closely with transport stakeholders, including Transport for London and train operator Govia Thameslink.

The suite of evidence-based documents we prepared was a key part of the application submitted to Croydon Council to secure planning permission for the expansion.



# 10 reasons why you should choose us to be your event transport solutions partner:

## 1.

### Proven record

Our pedigree in sport and events goes back more than 75 years. In-depth knowledge and experience, along with technical skills covering all aspects of transport design and development, make us the ideal partner to advise on the planning, delivery and operation of world-class events.

## 2.

### Collaborative approach

Strong collaboration between event stakeholders is key to successful planning and delivery. We work closely with all stakeholders to understand their goals and constraints, then find opportunities to add value and optimise solutions to achieve the best and most cost-effective outcomes. We develop trust-based relationships that allow us to do our best work.

## 3.

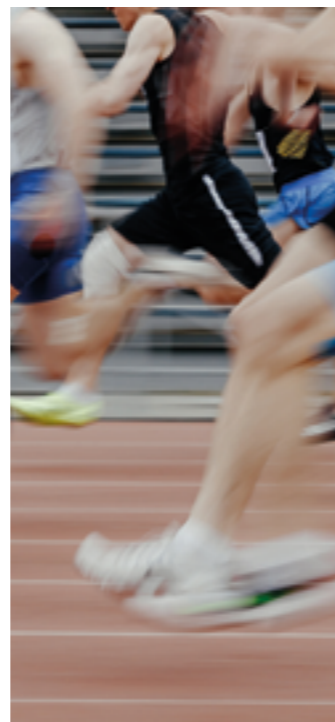
### Fresh thinking

As an employee-owned management, engineering and development consultancy, we have the independence of mind and freedom to see and do things differently. We constantly stretch our thinking to seek out innovative solutions. You can rely on us to offer a fresh perspective to any challenge.

## 4.

### Transparency and trust

We insist on the highest standards of integrity in everything we do. We were the first consultancy to be certified to BS 10500, the most stringent antibribery management standard in the world. This assurance of fairness, openness and honesty applies to all our staff, subconsultants and suppliers internationally.



## 5.

### Better environmental performance

As an organisation we are committed to playing our part in reducing greenhouse gas emissions. We are working towards being carbon-neutral and leading an industry coalition that is planning practical ways for the UK to achieve net-zero by 2050. We will work with you to save energy, cut carbon and use fewer resources throughout the project lifecycle, providing the skills and support you need to achieve the highest standards of environmental performance.

## 6.

### Improved communities

A successful event will act as an anchor in its host city, injecting investment into an area directly through the construction and operational phases, and indirectly improving the city and region through the strengthening of tourism and its identity. Our demand forecasting and modelling capabilities will help you to identify transport solutions that will make sure social and economic outcomes are realised and maximised.

## 7.

### Future-proof your investment

Given the ever-changing nature of technology, you need a partner that can navigate the complicated road ahead. We apply our expertise to provide strategy, design and delivery of technology solutions that can adapt to your evolving operational requirements. Our solutions are tailored to help you realise your objectives, while preserving and future-proofing your investment.

## 8.

### Meeting the needs of end-users

We never forget our responsibilities to those who should ultimately benefit from what we design and deliver. By understanding the bigger picture, and working hard to visualise the needs and concerns of end-users, we are better positioned to create socio-economic solutions that benefit everyone in your communities.

## 9.

### Technology and transport expertise

We have been a leader in systems development and technology solutions, such as Merlin, for more than 20 years, providing skills covering all aspects of the software and systems development lifecycle. Our dedicated technology practice is part of a multidisciplinary team equipped with the all-round skills to deliver engineering projects across the transport sector.

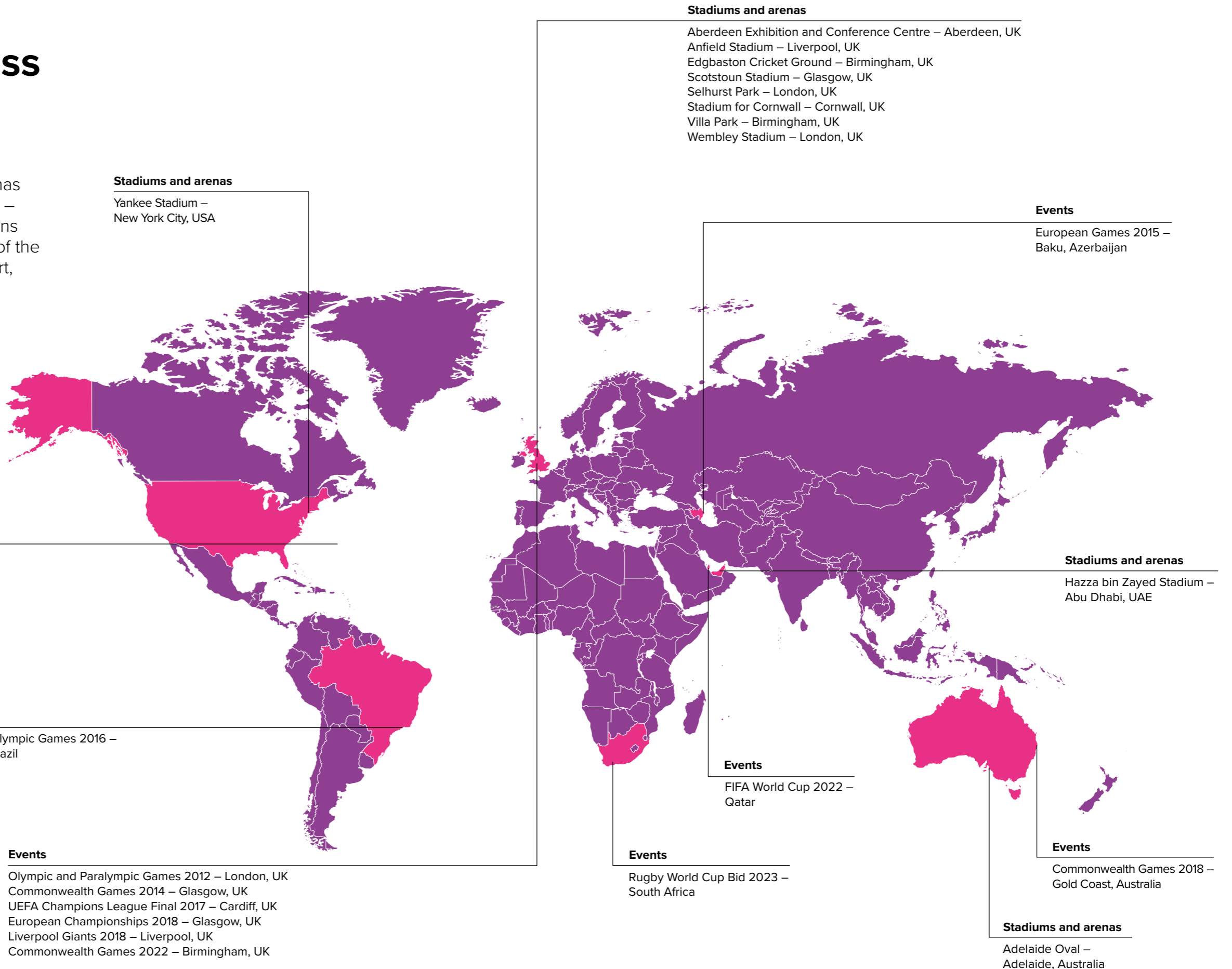
## 10.

### Leave a lasting legacy

An event may involve years of resource-intensive preparation and planning. Throughout the project lifecycle, we will maintain an unwavering focus on your goals. We will bring together our brightest minds to inquire, problem solve, invent and achieve the best outcomes. We provide specialist knowledge in legacy planning and sustainability, devising solutions that will provide optimum whole-life financial, environmental and social performance.

# Delivering across the globe

All over the world, Mott MacDonald has delivered – and is working to deliver – innovative, effective transport solutions for stadiums that are home to some of the most famous clubs and teams in sport, and for cities, regions and countries hosting the world’s biggest events.



**Stadiums and arenas**

Yankee Stadium –  
New York City, USA

**Stadiums and arenas**

Aberdeen Exhibition and Conference Centre – Aberdeen, UK  
Anfield Stadium – Liverpool, UK  
Edgbaston Cricket Ground – Birmingham, UK  
Scotstoun Stadium – Glasgow, UK  
Selhurst Park – London, UK  
Stadium for Cornwall – Cornwall, UK  
Villa Park – Birmingham, UK  
Wembley Stadium – London, UK

**Events**

European Games 2015 –  
Baku, Azerbaijan

**Events**

America’s Cup 2017 – Bermuda

**Stadiums and arenas**

Hazza bin Zayed Stadium –  
Abu Dhabi, UAE

**Events**

Olympic and Paralympic Games 2016 –  
Rio de Janeiro, Brazil

**Events**

FIFA World Cup 2022 –  
Qatar

**Events**

Rugby World Cup Bid 2023 –  
South Africa

**Events**

Commonwealth Games 2018 –  
Gold Coast, Australia

**Events**

Olympic and Paralympic Games 2012 – London, UK  
Commonwealth Games 2014 – Glasgow, UK  
UEFA Champions League Final 2017 – Cardiff, UK  
European Championships 2018 – Glasgow, UK  
Liverpool Giants 2018 – Liverpool, UK  
Commonwealth Games 2022 – Birmingham, UK

**Stadiums and arenas**

Adelaide Oval –  
Adelaide, Australia

# Opening opportunities with connected thinking.

Talk to us:

**Tom Fussell**

Europe

[tom.fussell@mottmac.com](mailto:tom.fussell@mottmac.com)

**Kate Mackay**

Asia Pacific, New Zealand and Australia

[kate.mackay@mottmac.com](mailto:kate.mackay@mottmac.com)

**Andrew Gardner**

North and South America

[andrew.gardner@mottmac.com](mailto:andrew.gardner@mottmac.com)

**Andy Stevenson**

South Asia, Middle East and Africa

[andy.stevenson@mottmac.com](mailto:andy.stevenson@mottmac.com)

Search **Mott MacDonald integrated transport**